

## Marine LED searchlight series

**Dimmable 100W-600W Marine LED searchlight series.**

**With adjustable beam angle and endless rotation LED lights.**

**For inland river vessels, ocean going vessels, harbour tugs and power boats.**

Beam angle adjustable from 5° spot beam to 10° flood beam



- TILT Sector: endless rotation
- PAN Sector: endless rotation
- Both lights can be controlled individually/ separately
- With wired control panel for use inside the wheelhouse and wireless remote control for use around the vessel
- Multiple lights can be controlled in unison from one wired control panel or one remote control
- Glass: reinforced tempered safety glass
- Standard housing colours that are available are white/ black/ grey. Other colours are available on request
- Choice of 4000K, 5000K and 6500K

## Features

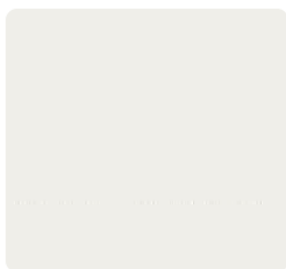
- Robust marine LED searchlight series
- Die-casting Aluminium Lamp body with AkzoNobel marine powder coating
- Die-casting Aluminium base
- Brushless servo motors
- LED lighting technology
- 316L Stainless Steel brackets
- 316L Stainless Steel Driver box
- 316L Stainless Steel C-frames
- PC wireless and waterproof (IP67) remote control and wired remote control for dash mounting
- AC and DC marine LED searchlights available
- Typical CRI 70. Higher CRI available on request

- Standard housing colours are white/ black/ grey.

- Black Marine powder coat Graphite Black - RAL9011 - gloss level



- White Marine powder coat Traffic White - RAL9016 - gloss level



- Grey Marine powder coat White Aluminium - RAL9006 - gloss level



- Other colours available on request

- Colour temperature: choice of mono-colour 4000K, 5000K and 6500K (to be confirmed upon order placement)
- TILT Sector: endless rotation
- PAN Sector: endless rotation
- Input power:
  - JN-MSL180 (single-lamp model): DC LED drivers are placed inside an exterior waterproof casing
  - JN-MSL200 (dual-lamp model), JN-MSL400 (dual-lamp model) and JN-MSL600 (dual-lamp model): AC LED drivers are integrated in the base of the searchlight

- All products are available with round mounting plate or square mounting plate
- Ingress Protection IP65
- Each LED searchlight is supplied with standard 2m long 3\*1.5mm<sup>2</sup> cable. Other cable lengths are available (please consult with your sales rep)
- Nominal life-time up to 50,000 h
- 3-year guarantee

### Functions

- Lighting for use during search and rescue, when entering and leaving ports, marinas, locks, docks, or during loading and unloading

### Suitable for a range of vessels and purposes

- inland river vessels, ocean going vessels, harbour tugs and power boats, security lighting etc.



## Model list

Model	Input Voltage	System power	Product type	Type of light	Dimensions	Accessories
JN-MSL100	AC or DC	180W	Single lamp	LED	L245*W30*H21mm	Wired control panel and wireless remote
JN-MSL200	AC or DC	200W	Dual lamp	LED	L285*W30*H21mm	Wired control panel and wireless remote
JN-MSL380	AC or DC	400W	Dual lamp	LED	L285*W30*H21mm	Wired control panel and wireless remote
JN-MSL600	AC or DC	600W	Dual lamp	LED	L355*W30*H21mm	Wired control panel and wireless remote

## Function list

Model	Beam angle adjustable from spot to flood beam	Wired dimming and remote supplied with searchlight	
		Wired panel	Wireless remote
JN-MSL100	✓	✓	✓
JN-MSL200			
JN-MSL380			
JN-MSL600			

## Light output data

Model	Input Voltage	System power	Product type	Type of light	Lumen output	Candela output
JN-MSL200	AC or DC	200W	Dual lamp	LED	17,000 lm	608,400 cd
JN-MSL380	AC or DC	400W	Dual lamp	LED	32,000 lm	1,200,000 cd
JN-MSL600	AC or DC	600W	Dual lamp	LED	50,500 lm	1,830,000 cd

### Output short-circuit behaviour

- Output short-circuit will not damage the driver. After removing the short circuit fault, the driver will automatically resume output

### Output no-load operation

- Output no-load will not damage the driver.

### Output overload protection

- The LED driver turns off the output if the output voltage range is exceeded. The output will be activated again after restarting the LED driver.

## Cable sizes

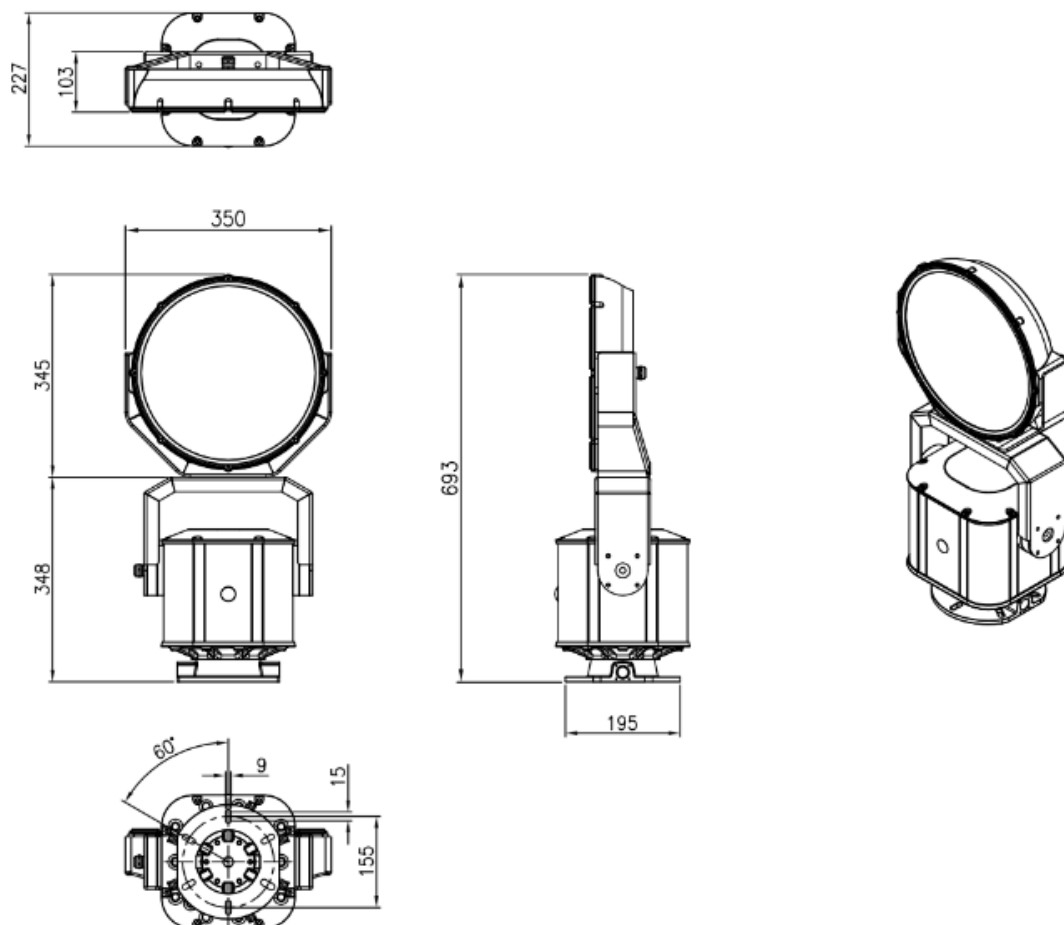
Input cable type	3*1.5mm <sup>2</sup>
------------------	----------------------

## Installation

### Mechanical dimensions

Unit:mm

#### JN-MSL180 (with round mounting plate)



- Standard with 2m long 3\*1.5mm<sup>2</sup> cable. Other cable lengths possible (please consult with your sales rep)
- M10 size screws are required (screws are not supplied with the searchlight)
- screw holes size: 6x Ø11 (screws are not supplied with the searchlight)

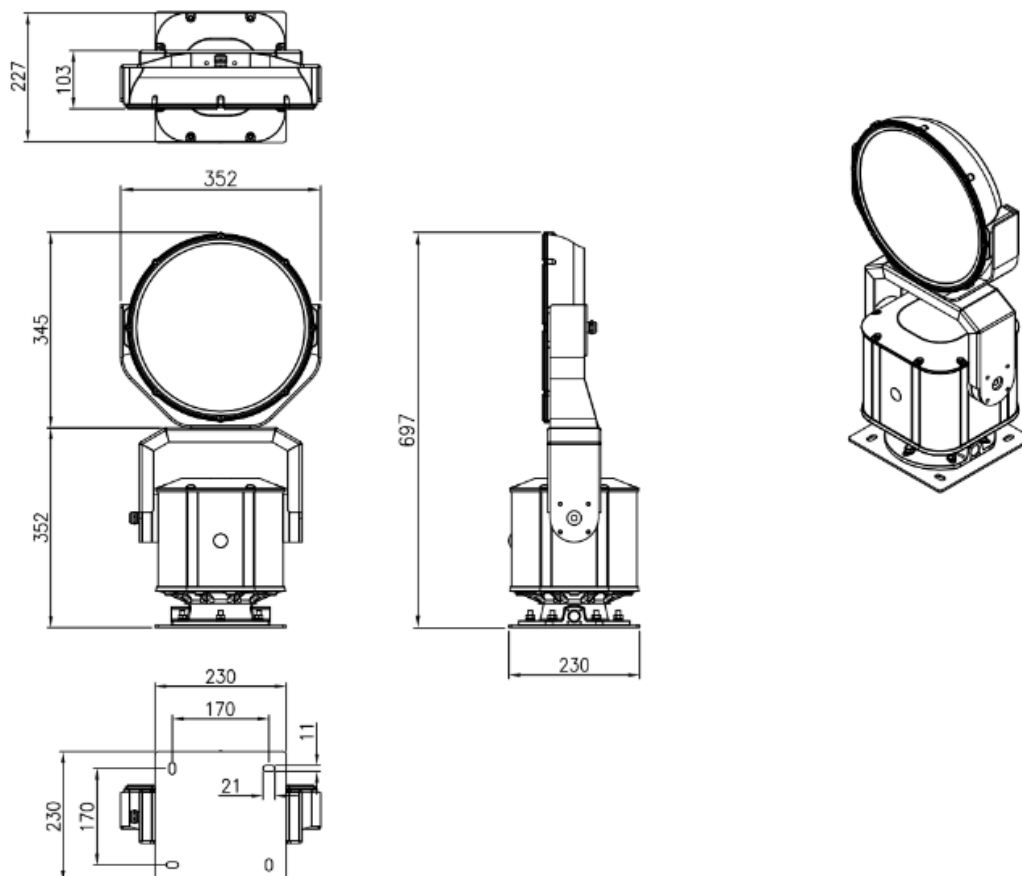
Model	Product size	Crate size	Qty/ crate	N.W.	G.W.
JN-MSL180	L693*W350*H227mm	L50*W30*H55cm)	1pc	38KG	48KG

## Installation

### Mechanical dimensions

Unit:mm

#### JN-MSL180 (with square mounting plate)



- Standard with 2m long 3\*1.5mm<sup>2</sup> cable. Other cable lengths possible (please consult with your sales rep)
- M10 size screws are required (screws are not supplied with the searchlight)
- screw holes size: 6x Ø11 (screws are not supplied with the searchlight)

Model	Product size	Crate size	Qty/ crate	N.W.	G.W.
JN-MSL180	L693*W350*H227mm	L50*W30*H55cm)	1pc	38KG	48KG

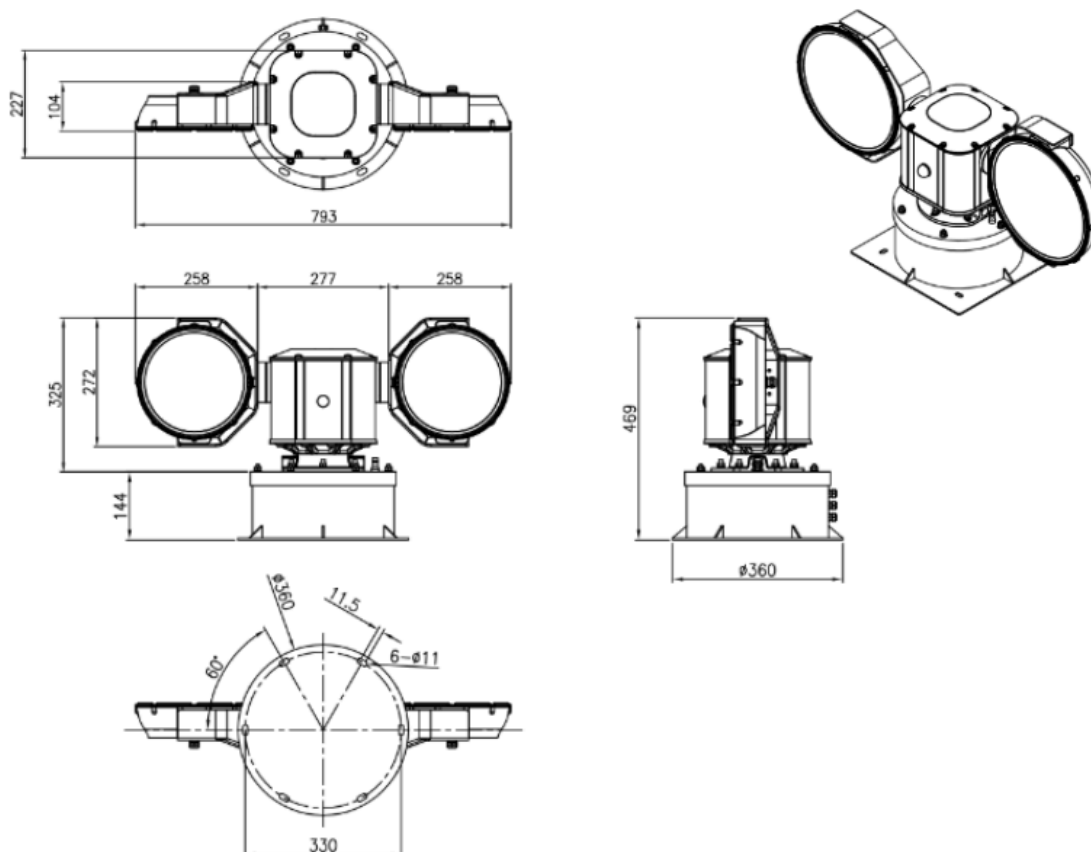


## Installation

### Mechanical dimensions

Unit:mm

#### JN-MSL200 (with square mounting plate)



- Standard with 2m long 3\*1.5mm<sup>2</sup> cable. Other cable lengths possible (please consult with your sales rep)
- M10 size screws are required (screws are not supplied with the searchlight)
- screw holes size: 6x Ø11 (screws are not supplied with the searchlight)

Model	Product size	Crate size	Qty/ crate	N.W.	G.W.
JN-MSL200	L793*W227*H489mm	L93*W43*H53cm	1pc	38KG	48KG

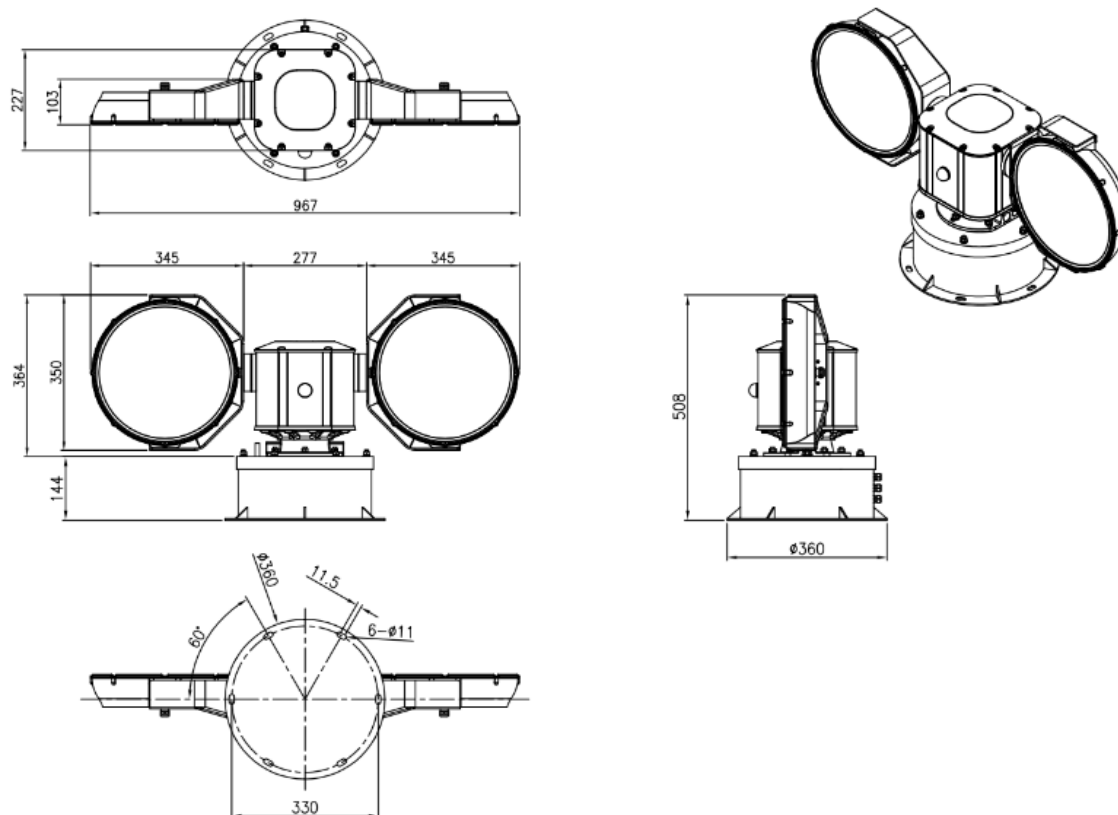


## Installation

### Mechanical dimensions

Unit:mm

JN-MSL380 (With round mounting plate)



- Standard with 2m long 3\*1.5mm<sup>2</sup> cable. Other cable lengths possible (please consult with your sales rep)
- M10 size screws are required (screws are not supplied with the searchlight)
- screw holes size: 6x Ø11 (screws are not supplied with the searchlight)

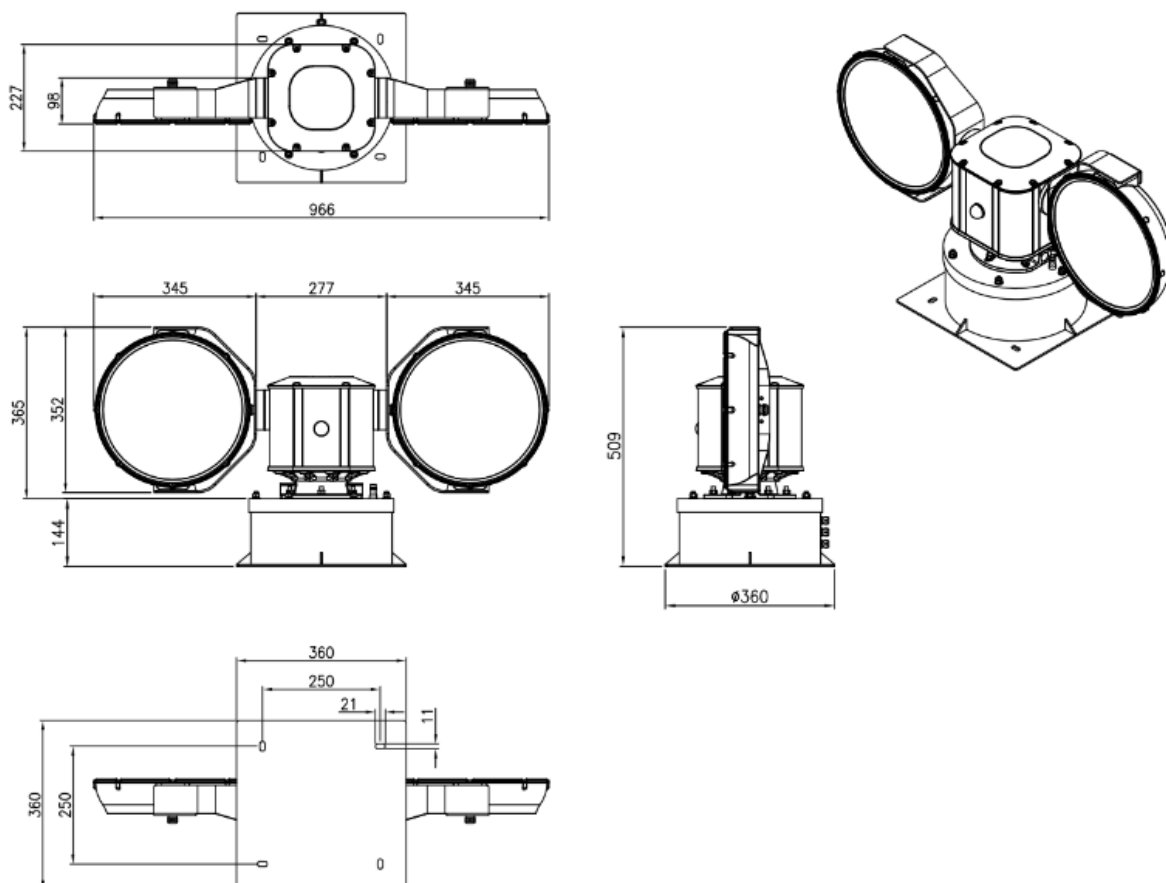
Model	Product size	Crate size	Qty/ crate	N.W.	G.W.
JN-MSL380	L967*W227*H508mm	L103*W45.5*H61.2cm	1pc	42KG	55KG

## Installation

### Mechanical dimensions

Unit:mm

JN-MSL380 (with square mounting plate)



- Standard with 2m long 3\*1.5mm<sup>2</sup> cable. Other cable lengths possible (please consult with your sales rep)
- M10 size screws are required (screws are not supplied with the searchlight)
- screw holes size: 6x Ø11 (screws are not supplied with the searchlight)

Model	Product size	Crate size	Qty/ crate	N.W.	G.W.
JN-MSL380	L967*W227*H508mm	L103*W45.5*H61.2cm	1pc	42KG	55KG

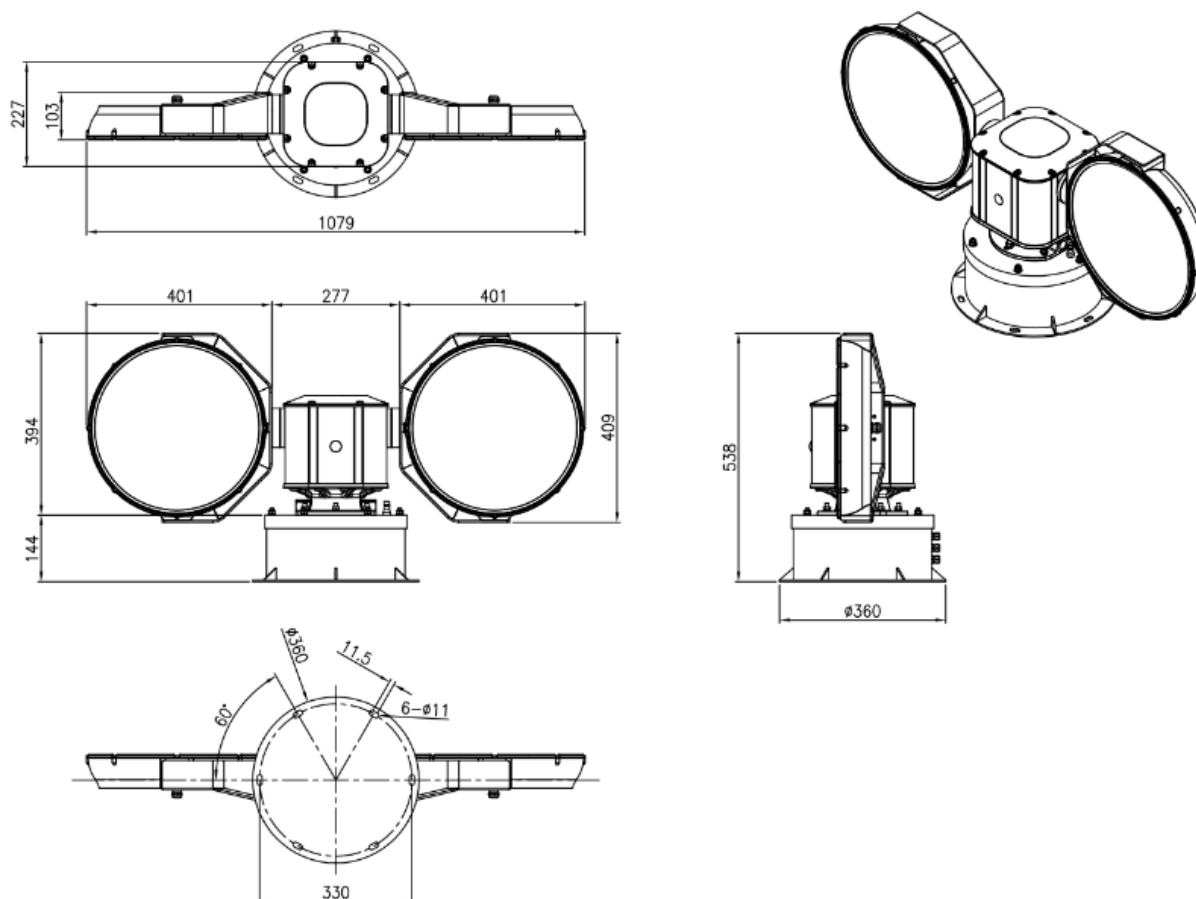


## Installation

### Mechanical dimensions

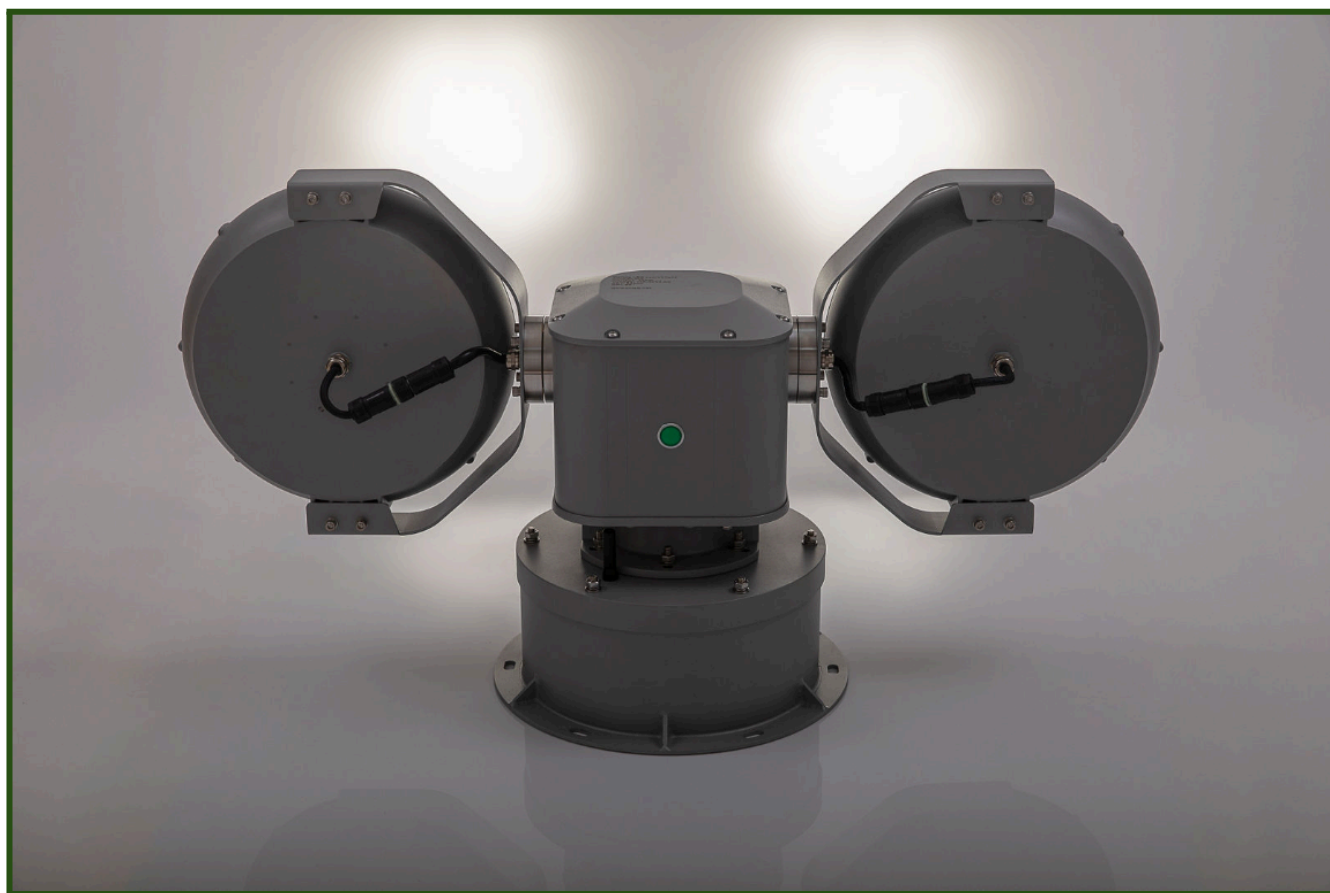
Unit:mm

JN-MSL600 (with round mounting plate)



- Standard with 2m long 3\*1.5mm<sup>2</sup> cable. Other cable lengths possible (please consult with your sales rep)
- M10 size screws are required (screws are not supplied with the searchlight)
- screw holes size: 6x Ø11 (screws are not supplied with the searchlight)

Model	Product size	Crate size	Qty/ crate	N.W.	G.W.
JN-MSL600	L1079*W227*H538mm	L121*W47*H63cm	1pc	47KG	62KG

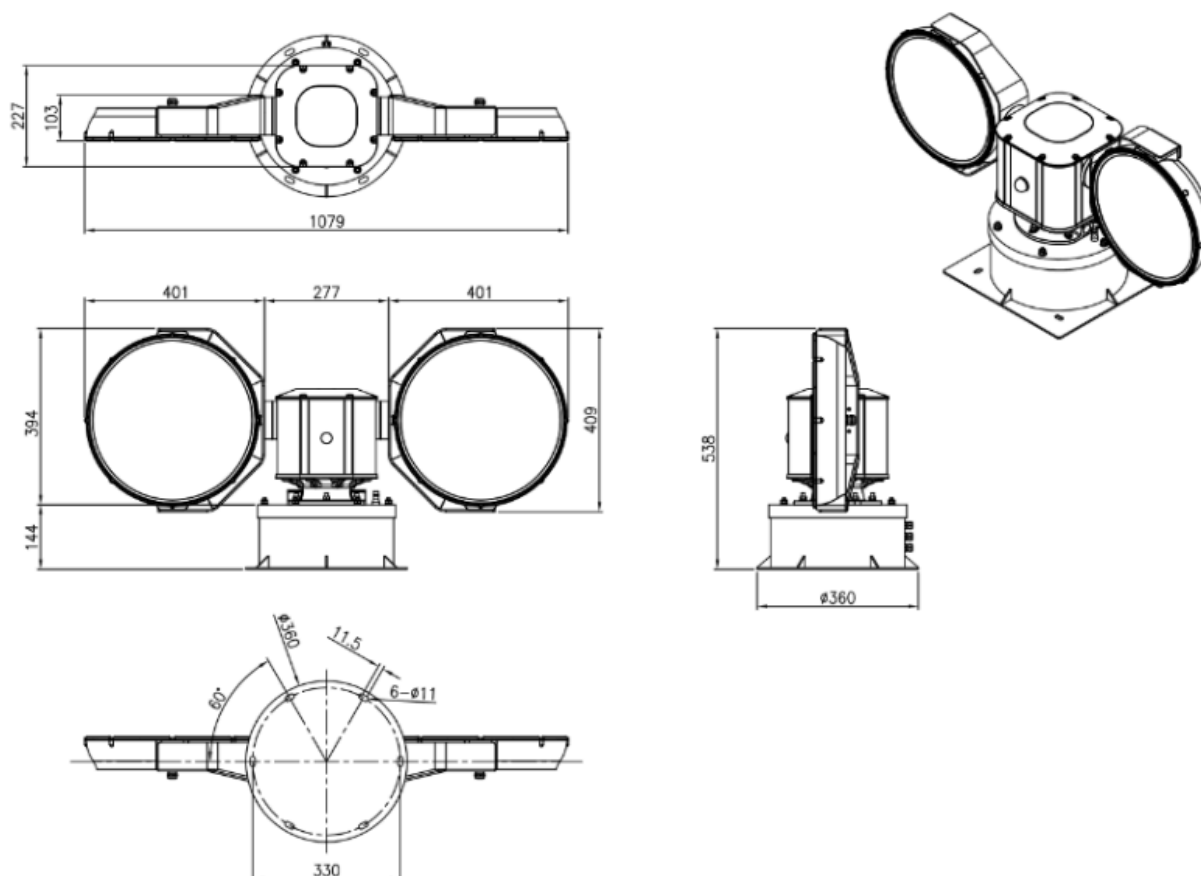


## Installation

### Mechanical dimensions

Unit:mm

JN-MSL600 (with square mounting plate)



- Standard with 2m long 3\*1.5mm<sup>2</sup> cable. Other cable lengths possible (please consult with your sales rep)
- M10 size screws are required (screws are not supplied with the searchlight)
- screw holes size: 6x Ø11 (screws are not supplied with the searchlight)

Model	Product size	Crate size	Qty/ crate	N.W.	G.W.
JN-MSL600	L1079*W227*H538mm	L121*W47*H63cm	1pc	47KG	62KG

## Installation note

### Mounting screw specifications and torque

- Max. torque at the clamping screw: **TBC**

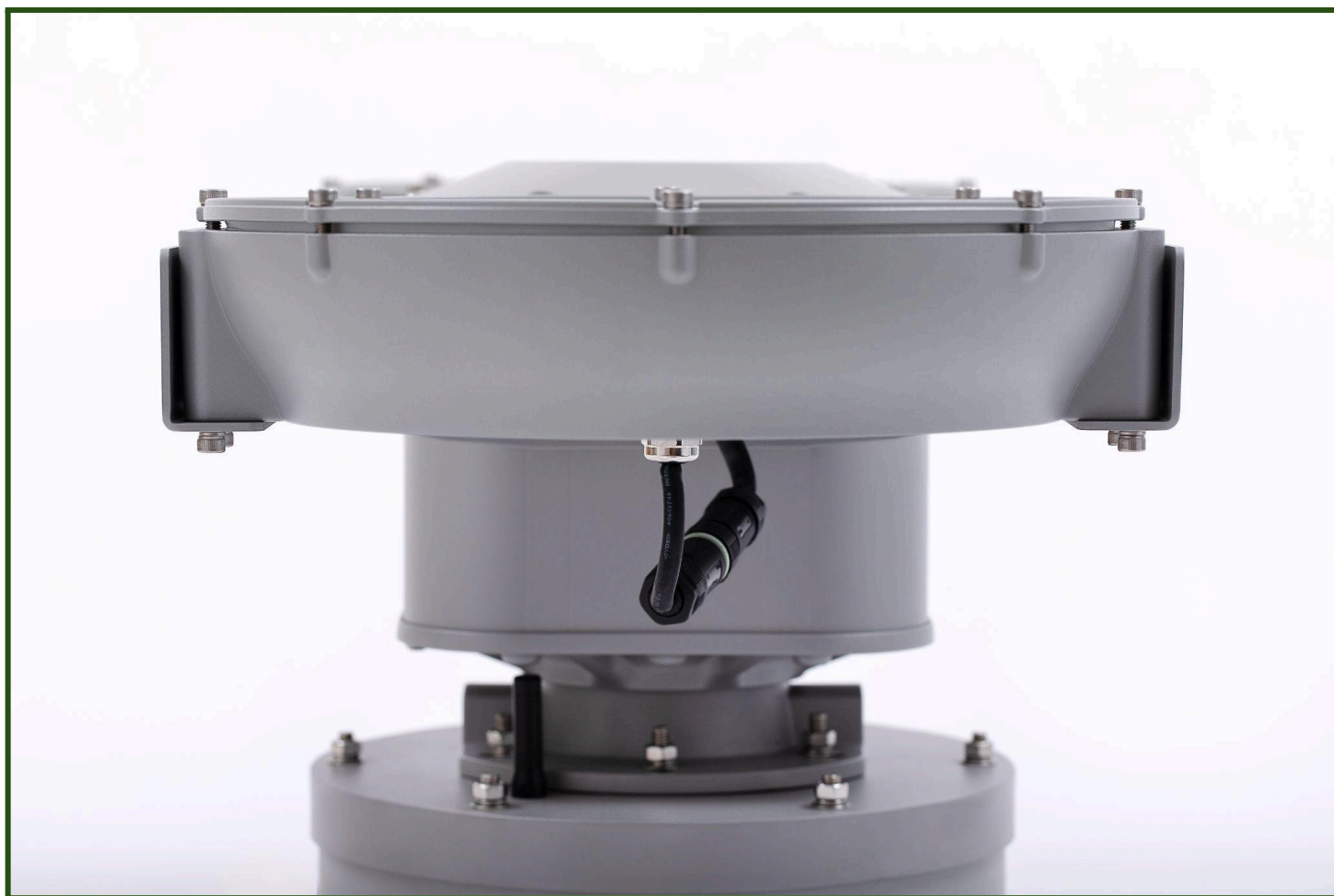
- M10 size screws are required (screws are not supplied with the searchlight)
- screw holes size: 6x Ø11 (screws are not supplied with the searchlight)

### Installation requirements

- Standard with 2m long 3\*1.5mm<sup>2</sup> cable. Other cable lengths possible (please consult with your sales rep)









A sturdy ply-wood crate is used to pack each LED searchlight. The crate does not require fumigation before cross-border shipping.

Model	Crate material	Crate size	Qty/ crate	N.W.	G.W.
JN-MSL180	Plywood	L50*W30*H55cm)	1pc	23KG	28KG
JN-MSL200	Plywood	L93*W43*H53cm	1pc	38KG	48KG
JN-MSL380	Plywood	L103*W45.5*H61.2cm	1pc	42KG	55KG
JN-MSL600	Plywood	L121*W47*H63cm	1pc	47KG	62KG

